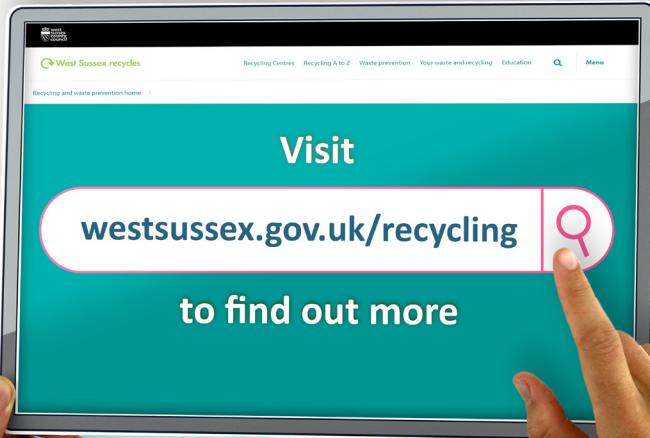


# Confused about recycling?



**THINK BEFORE YOU THROW**



# What can I put in my recycling bin?

Items should be Clean, Dry and Loose  
**Not tied up in plastic bags!**

## ✓ Yes please

## ✗ No thanks



**Paper & card**

- Junk mail
- Cereal and egg boxes
- Newspapers and magazines
- Wrapping paper (if scrunchable)
- Catalogues and directories
- Coffee cups and lids

- Shredded paper
- Paper towels
- Tissues
- Polystyrene cups



**foil**

- Clean takeaway containers
- Foil trays
- Tin foil

- Pet food pouches
- Food pouches
- Crisp packets



**glass bottles & jars**

- Wine bottles
- Beer bottles
- Perfume bottles
- Jam jars
- Sauce jars

- Pyrex<sup>®</sup>
- Drinking glasses and crockery



**metal cans & aerosols**

- Food cans
- Drink cans
- Pet food cans
- Empty aerosols
- Biscuit and sweet tins

- Cables
- Batteries
- Electrical items



**cartons**

- Fruit juice cartons
- Custard cartons
- Soup cartons
- Milk cartons

- Plastic bags and film
- Plant pots and seed trays
- Polystyrene



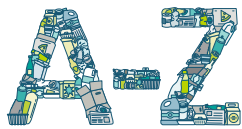
**plastic bottles & containers**

- Milk/drinks bottles
- Bathroom/laundry bottles and tubs
- Moulded plastic packaging
- Food, fruit and ready meal pots, tubs and trays
- Plastic container lids
- Flexible toothpaste tubes

Squash your empty plastic bottles and replace the lid before they go into the recycling bin.

Printed on FSC certified paper. WS33336(A) 02.25

To find out more, use our handy searchable A-Z of recycling and waste:



Powered by Adobe. Please check [adobe.com/uk/privacy/policy](https://www.adobe.com/uk/privacy/policy)

